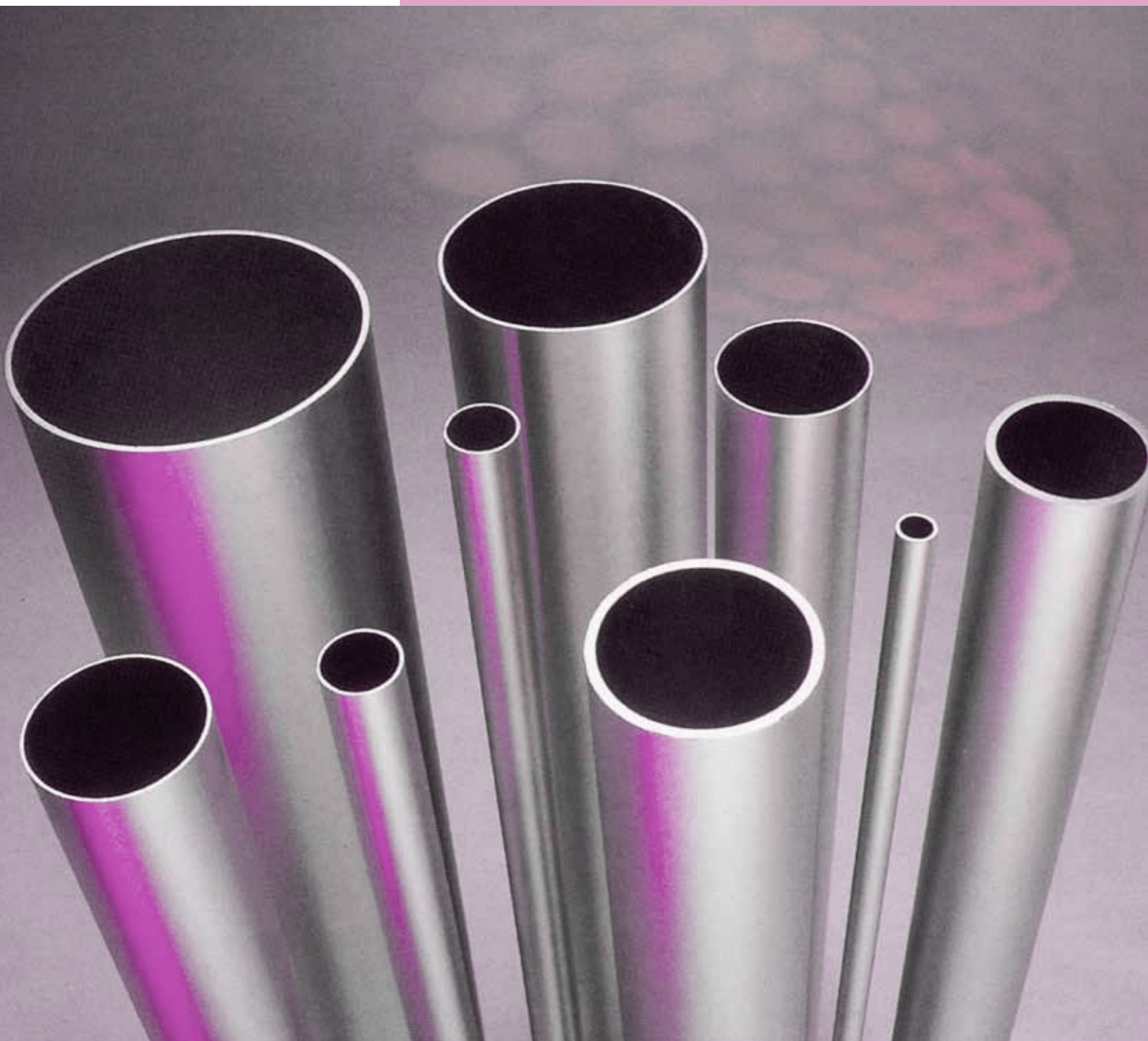
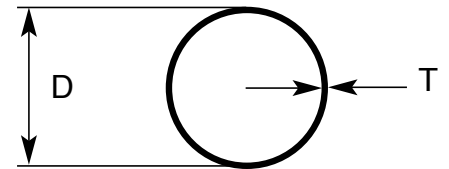


Gama ISO de acero inoxidable





Tubos soldados según ISO-1127



| Diámetro nominal | | Diámetro ext. mm | Espesor mm | | | | | | | | | | | | | |
|------------------|--------|------------------|------------|-------|-------|-------|--------|--------|--------|--------|--------|--------|---------|---------|---------|--|
| DN | Pulg. | | 0,80 | 1 | 1,2 | 1,6 | 2 | 2,5 | 2,6 | 3 | 3,2 | 3,6 | 4 | 5 | 6 | |
| | | Peso en kg/m | | | | | | | | | | | | | | |
| 10 | 3/8" | 17,2 | 0,329 | 0,406 | 0,481 | 0,625 | 0,761 | 0,920 | 0,951 | 1,067 | | | | | | |
| 15 | 1/2" | 21,3 | 0,411 | 0,508 | 0,604 | 0,789 | 0,967 | 1,177 | 1,217 | 1,375 | | | | | | |
| 20 | 3/4" | 26,9 | 0,523 | 0,649 | 0,772 | 1,014 | 1,247 | 1,527 | 1,582 | 1,795 | | | | | | |
| 25 | 1" | 33,7 | 0,659 | 0,819 | 0,977 | 1,286 | 1,588 | 1,953 | 2,025 | 2,306 | 2,444 | | | | | |
| 32 | 1 1/4" | 42,4 | | 1,037 | 1,238 | 1,536 | 2,023 | 2,498 | 2,591 | 2,960 | 3,141 | 3,498 | 3,846 | | | |
| 40 | 1 1/2" | 48,3 | | 1,184 | 1,415 | 1,758 | 2,319 | 2,867 | 2,975 | 3,403 | 3,614 | 4,029 | 4,437 | | | |
| 50 | 2" | 60,3 | | 1,485 | 1,776 | 2,209 | 2,920 | 3,618 | 3,757 | 4,304 | 4,575 | 5,111 | 5,639 | 6,924 | | |
| 65 | 2 1/2" | 76,1 | | 1,881 | 2,251 | 2,802 | 3,711 | 4,607 | 4,785 | 5,491 | 5,841 | 6,535 | 7,222 | 8,902 | | |
| 80 | 3" | 88,9 | | | 2,635 | 3,283 | 3,498 | 5,409 | 5,618 | 6,453 | 6,867 | 7,689 | 8,504 | 10,504 | | |
| 90 | 3 1/2" | 101,6 | | | | 3,760 | 4,006 | 4,988 | 6,445 | 7,407 | 7,885 | 8,834 | 9,776 | 12,094 | | |
| 100 | 4" | 114,3 | | | | 4,237 | 4,515 | 5,624 | 7,272 | 8,361 | 8,902 | 9,979 | 11,048 | 13,684 | 16,271 | |
| 125 | 5" | 139,7 | | | | 5,533 | 6,896 | 8,589 | 8,926 | 10,269 | 10,937 | 12,269 | 13,592 | 16,864 | 20,087 | |
| 150 | 6" | 168,3 | | | | 6,679 | 8,328 | 10,379 | 10,788 | 12,417 | 13,229 | 14,847 | 16,456 | 20,445 | 24,384 | |
| 200 | 8" | 219,1 | | | | | 10,872 | 13,559 | 14,095 | 16,233 | 17,300 | 19,426 | 21,544 | 26,805 | 32,016 | |
| 250 | 10" | 273 | | | | | 13,572 | 16,933 | 17,604 | 20,282 | 21,619 | 24,285 | 26,943 | 33,554 | 40,114 | |
| 300 | 12" | 323,9 | | | | | 16,121 | 20,120 | 20,918 | 24,106 | 25,697 | 28,873 | 32,041 | 39,926 | 47,761 | |
| 350 | 14" | 355,6 | | | | | 17,708 | 22,104 | 22,982 | 26,487 | 28,237 | 31,731 | 35,216 | 43,895 | 52,524 | |
| 400 | 16" | 406,4 | | | | | 20,252 | 25,284 | 26,289 | 30,303 | 32,308 | 36,310 | 40,304 | 50,255 | 60,156 | |
| 450 | 18" | 457,2 | | | | | 22,759 | 28,462 | 29,594 | 34,000 | 36,320 | 40,82 | 45,320 | 56,612 | 67,784 | |
| 500 | 20" | 508 | | | | | 25,338 | 31,642 | 32,901 | 37,933 | 40,446 | 45,465 | 50,477 | 62,971 | 75,416 | |
| 600 | 24" | 609,6 | | | | | | | | 45,565 | 48,586 | 54,623 | 60,635 | 75,691 | 90,679 | |
| 700 | 28" | 711,2 | | | | | | | | | | | 70,828 | 88,411 | 105,942 | |
| 800 | 32" | 812,8 | | | | | | | | | | | 81,004 | 101,136 | 121,206 | |
| 900 | 36" | 914,4 | | | | | | | | | | | 91,180 | 113,850 | 136,470 | |
| 1000 | 40" | 1016 | | | | | | | | | | | 101,335 | 126,597 | 151,733 | |

Composición química: Ver página 8

Características mecánicas: Ver página 9

Calidad del material: AISI 304/304L, 316/316L, duplex

Acabados: Ver página 13

Tolerancias: Ver página 33

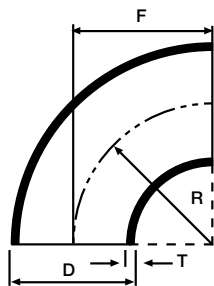
Normas de fabricación: EN 10217-7

EN 10296-2

Longitud de suministro: 6.000 mm.

Otros largos, espesores, calidades o características especiales bajo pedido especial (consultar).





Codos 90° soldados

Accesorios de acero inoxidable para soldar

| Diámetro nominal | | Diámetro D mm | Radio R=F mm | Espesor T mm | Peso Kg |
|------------------|--------|---------------------|--------------------|--------------------|------------|
| DN | Pulg. | | | | |
| 15 | 1/2" | 21,3 | 27 | 1,6/2 | 0,03/0,04 |
| 20 | 3/4" | 26,9 | 28 | 1,6/2 | 0,05/0,06 |
| 25 | 1" | 33,7 | 38 | 1,6/2 | 0,08/0,09 |
| 32 | 1 1/4" | 42,4 | 47 | 1,6/2 | 0,12/0,15 |
| 40 | 1 1/2" | 48,3 | 57 | 1,6/2 | 0,17/0,21 |
| 50 | 2" | 60,3 | 76 | 1,6/2 | 0,29/0,35 |
| 65 | 2 1/2" | 76,1 | 95 | 1,6/2 | 0,44/0,55 |
| 80 | 3" | 88,9 | 114 | 2/3 | 0,78/1,10 |
| 100 | 4" | 114,3 | 152 | 2/3 | 1,35/1,9 |
| 125 | 5" | 139,7 | 190 | 2/3 | 2,07/3,1 |
| 150 | 6" | 168,3 | 229 | 2/3 | 3,0/4,6 |
| 200 | 8" | 219,1 | 305 | 2/3 | 5,2/8,7 |
| 250 | 10" | 273 | 381 | 2/3 | 8,2/12,2 |
| 300 | 12" | 323,9 | 457 | 2/3 | 11,6/17,4 |
| 350 | 14" | 355,6 | 533,5 | 3/4 | 22/24 |
| 400 | 16" | 406,4 | 610 | 3/4 | 29/39 |
| 450 | 18" | 457,2 | 686 | 4 | 49 |
| 500 | 20" | 508 | 762 | 4 | 60,4 |
| 600 | 24" | 610 | 914 | 4 | 87,1 |
| 700 | 28" | 711,2 | 1067 | 4/5 | 119/148 |
| 800 | 32" | 812,8 | 1219 | 4/5 | 156/195 |
| 900 | 36" | 914,4 | 1372 | 4/5 | 206/246 |
| 1000 | 40" | 1016 | 1524 | 4/5 | 243/304 |

Radio: Aproximadamente 1,5 veces el diámetro nominal.

Calidad del material: AISI-304 / 304 L / 316 / 316 L, duplex.

Composición química: Ver página 8.

Características mecánicas: Ver página 9.

Bajo consulta se pueden fabricar en otros espesores.

Tolerancias: Ver página 34.

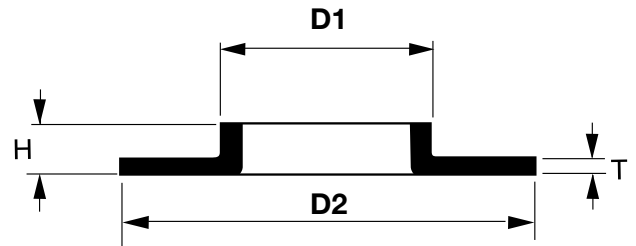
Normas de fabricación: EN 10253-3/EN 10253-4.





Collarines

Accesorios de acero inoxidable para soldar



| Diámetro nominal | | D1 mm | D2 mm | H mm | Peso T=2 Kg | Peso T=3 Kg | Peso T=4 Kg | Peso T=5 Kg |
|------------------|--------|----------|----------|---------|-------------------|-------------------|-------------------|-------------------|
| DN | Pulg. | | | | | | | |
| 15 | 1/2" | 21,3 | 43 | 6 | 0,021 | 0,032 | | |
| 20 | 3/4" | 26,9 | 58 | 8 | 0,039 | 0,058 | 0,077 | |
| 25 | 1" | 33,7 | 68 | 9 | 0,051 | 0,077 | 0,103 | |
| 32 | 1 1/4" | 42,4 | 78 | 10 | 0,067 | 0,101 | 0,135 | |
| 40 | 1 1/2" | 48,3 | 88 | 10 | 0,082 | 0,123 | 0,164 | |
| 50 | 2" | 60,3 | 102 | 12 | 0,107 | 0,161 | 0,215 | |
| 65 | 2 1/2" | 76,1 | 122 | 12 | 0,145 | 0,217 | 0,289 | |
| 80 | 3" | 88,9 | 139 | 12 | 0,185 | 0,277 | 0,369 | |
| 100 | 4" | 114,3 | 158 | 16 | 0,214 | 0,321 | 0,428 | |
| 125 | 5" | 139,7 | 188 | 16 | 0,278 | 0,417 | 0,556 | |
| 150 | 6" | 168,3 | 212 | 17 | 0,318 | 0,477 | 0,637 | |
| 200 | 8" | 219,1 | 270 | 18 | 0,472 | 0,708 | 0,943 | |
| 250 | 10" | 273,0 | 323 | 18 | 0,556 | 0,835 | 1,113 | |
| 300 | 12" | 323,9 | 370 | 19 | 0,641 | 0,962 | 1,282 | |
| 350 | 14" | 355,6 | 430 | 21 | 1,012 | 1,518 | 2,024 | |
| 400 | 16" | 406,4 | 482 | 21 | | 1,770 | 2,360 | |
| 450 | 18" | 457,2 | 532 | 25 | | 2,087 | 2,783 | |
| 500 | 20" | 508,0 | 587 | 27 | | 2,286 | 3,048 | |
| 600 | 24" | 609,6 | 685 | 26 | | 2,719 | 3,625 | |
| 700 | 28" | 711,2 | 800 | 53 | | 5,04 | 6,72 | 8,40 |
| 800 | 32" | 812,8 | 905 | 63 | | 6,24 | 8,32 | 10,40 |
| 900 | 36" | 914,4 | 1005 | 63 | | 7,20 | 9,60 | 12,00 |
| 1000 | 40" | 1016,0 | 1110 | 63 | | 8,16 | 10,88 | 13,60 |

Calidad del material: AISI-304 / 304 L, 316 / 316 L, duplex.

Composición química: Ver página 8.

Características mecánicas: Ver página 9.

Bajo consulta se pueden fabricar en otros espesores.

Tolerancias: Ver página 34.

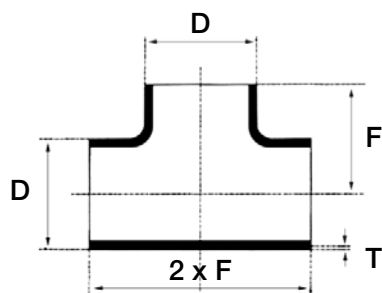
Norma de fabricación: EN 1092-1 Tipo 33.





Tes iguales

Accesorios de acero inoxidable para soldar



| Diámetro nominal | | D mm | F mm | Peso T=2 Kg | Peso T=3 Kg | Peso T=4 Kg |
|------------------|--------|---------|---------|-------------------|-------------------|-------------------|
| DN | Pulg. | | | | | |
| 15 | 1/2" | 21,3 | 25,5 | 0,055 | | |
| 20 | 3/4" | 26,9 | 28,5 | 0,079 | | |
| 25 | 1" | 33,7 | 38 | 0,137 | 0,215 | |
| 32 | 1 1/4" | 42,4 | 47,5 | 0,233 | 0,344 | |
| 40 | 1 1/2" | 48,3 | 57 | 0,307 | 0,463 | |
| 50 | 2" | 60,3 | 63,5 | 0,408 | 0,612 | |
| 65 | 2 1/2" | 76,1 | 76 | 0,603 | 0,941 | |
| 80 | 3" | 88,9 | 85,5 | 0,860 | 1,263 | |
| 100 | 4" | 114,3 | 105 | 1,268 | 1,981 | |
| 125 | 5" | 139,7 | 124 | 1,856 | 2,783 | |
| 150 | 6" | 168,3 | 143 | 2,984 | 3,808 | |
| 200 | 8" | 219,1 | 178 | 4,337 | 6,505 | |
| 250 | 10" | 273,0 | 216 | 5,23 | 7,85 | 10,47 |
| 300 | 12" | 223,9 | 254 | 12,35 | 18,53 | 24,68 |
| 350 | 14" | 355,6 | 279 | 14,77 | 22,16 | 29,52 |
| 400 | 16" | 406,4 | 305 | | 27,92 | 37,20 |
| 450 | 18" | 457,2 | 343 | | 35,35 | 47,10 |
| 500 | 20" | 508,0 | 381 | | 43,64 | 58,16 |
| 600 | 24" | 609,6 | 432 | | 62,84 | 83,78 |
| 700 | 28" | 711,2 | 1042 | | 127,35 | 169,80 |
| 800 | 32" | 812,8 | 1194 | | 167,46 | 223,28 |
| 900 | 36" | 914,4 | 1346 | | 212,00 | 282,66 |
| 1000 | 40" | 1016,0 | 1498 | | 261,77 | 349,03 |

Calidad del material: AISI-304 / 304 L, 316 / 316 L, duplex.

Composición química: Ver página 8.

Características mecánicas: Ver página 9.

Bajo consulta se pueden fabricar en otros espesores.

Tolerancias: Ver página 34.

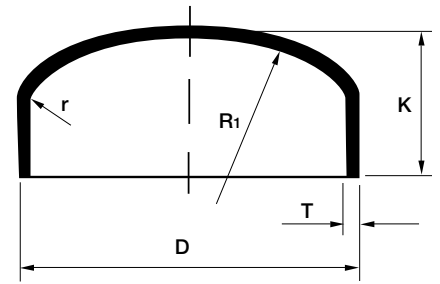
Norma de fabricación: EN 10253-3/EN 10253-4.





Caps

Accesorios de acero inoxidable para soldar



| Diámetro nominal | | D mm | K mm | Peso T=2 Kg | K mm | Peso T=3 Kg |
|------------------|--------|---------|---------|-------------------|---------|-------------------|
| DN | Pulg. | | | | | |
| 15 | 1/2" | 21,3 | 14,5 | 0,015 | 15,5 | 0,023 |
| 20 | 3/4" | 26,9 | 10,5 | 0,015 | 12 | 0,023 |
| 25 | 1" | 33,7 | 12,5 | 0,023 | 14,5 | 0,035 |
| 32 | 1 1/4" | 42,4 | 17 | 0,042 | 18 | 0,063 |
| 40 | 1 1/2" | 48,3 | 17 | 0,050 | 23 | 0,087 |
| 50 | 2" | 60,3 | 20 | 0,076 | 22 | 0,115 |
| 65 | 2 1/2" | 76,1 | 27 | 0,131 | 29 | 0,196 |
| 80 | 3" | 88,9 | 29 | 0,166 | 30 | 0,249 |
| 90 | 3 1/2" | 101,6 | 26 | 0,187 | 27 | 0,280 |
| 100 | 4" | 114,3 | 32 | 0,246 | 32 | 0,369 |
| 125 | 5" | 139,7 | 35 | 0,372 | 36 | 0,532 |
| 150 | 6" | 168,3 | 40 | 0,518 | 43 | 0,776 |
| 200 | 8" | 219,1 | 50 | 0,849 | 51 | 1,274 |
| 250 | 10" | 273 | 63 | 1,310 | 62 | 1,966 |
| 300 | 12" | 323,9 | 72 | 1,814 | 72 | 2,720 |
| 350 | 14" | 355,6 | | | 89 | 3,516 |
| 400 | 16" | 406,4 | | | 98 | 4,523 |
| 450 | 18" | 457,2 | | | 107 | 5,494 |
| 500 | 20" | 508 | | | 120 | 6,558 |
| 600 | 24" | 609,6 | | | 140 | 9,232 |
| 700 | 28" | 711,2 | | | 152 | 12,900 |

Radio mayor (R1)= Aproximadamente 0,8 D
Radio pequeño (r)= Aproximadamente 0,15 D

Calidad del material:

AISI-304 / 304 L, 316 / 316 L, duplex.

Composición química: Ver página 8.

Características mecánicas: Ver página 9.

Tolerancias: Ver página 34.

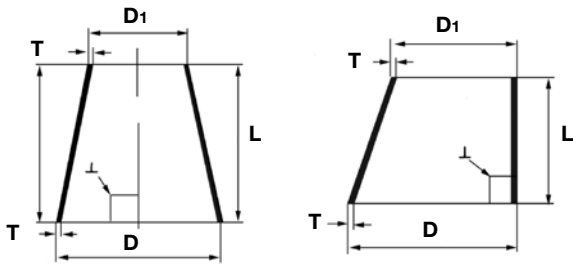
Norma de fabricación: EN 10253-3/EN 10253-4.





Reducciones concéntricas y excéntricas

Accesorios de acero inoxidable para soldar

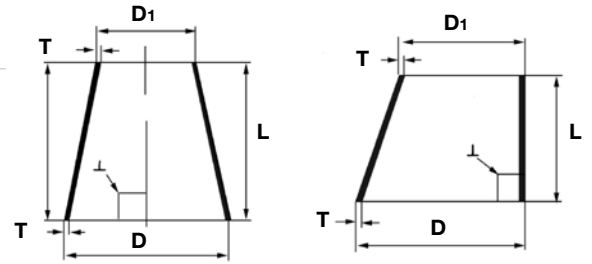


| Diámetro nominal | | D mm | D ₁ mm | L mm | Peso T=2 Kg | Peso T=3 Kg | Peso T=4 Kg |
|------------------|-----------------|---------|----------------------|---------|-------------------|-------------------|-------------------|
| DN | Pulg. | | | | | | |
| 20 x 15 | 3/4" x 1/2" | 26,9 | 21,3 | 38 | 0,046 | | |
| 25 x 15 | 1" x 1/2" | 33,7 | 21,3 | 51 | 0,070 | 0,106 | |
| 25 x 20 | 1" x 3/4" | 33,7 | 26,9 | 51 | 0,078 | 0,116 | |
| 32 x 15 | 1 1/4" x 1/2" | 42,4 | 21,3 | 51 | 0,082 | 0,122 | |
| 32 x 20 | 1 1/4" x 3/4" | 42,4 | 26,9 | 51 | 0,089 | 0,133 | |
| 32 x 25 | 1 1/4" x 1" | 42,4 | 33,7 | 51 | 0,097 | 0,146 | |
| 40 x 15 | 1 1/2" x 1/2" | 48,3 | 21,3 | 64 | 0,112 | 0,168 | |
| 40 x 20 | 1 1/2" x 3/4" | 48,3 | 26,9 | 64 | 0,121 | 0,181 | |
| 40 x 25 | 1 1/2" x 1" | 48,3 | 33,7 | 64 | 0,132 | 0,198 | |
| 40 x 32 | 1 1/2" x 1 1/4" | 48,3 | 42,4 | 64 | 0,146 | 0,219 | |
| 50 x 15 | 2" x 1/2" | 60,3 | 21,3 | 76 | 0,156 | 0,234 | |
| 50 x 20 | 2" x 3/4" | 60,3 | 26,9 | 76 | 0,166 | 0,250 | |
| 50 x 25 | 2" x 1" | 60,3 | 33,7 | 76 | 0,179 | 0,269 | |
| 50 x 32 | 2" x 1 1/4" | 60,3 | 42,4 | 76 | 0,196 | 0,294 | |
| 50 x 40 | 2" x 1 1/2" | 60,3 | 48,3 | 76 | 0,207 | 0,311 | |
| 65 x 20 | 2 1/2" x 3/4" | 76,1 | 26,9 | 89 | 0,230 | 0,345 | |
| 65 x 25 | 2 1/2" x 1" | 76,1 | 33,7 | 89 | 0,245 | 0,368 | |
| 65 x 32 | 2 1/2" x 1 1/4" | 76,1 | 42,4 | 89 | 0,265 | 0,397 | |
| 65 x 40 | 2 1/2" x 1 1/2" | 76,1 | 48,3 | 89 | 0,278 | 0,417 | |
| 65 x 50 | 2 1/2" x 2" | 76,1 | 60,3 | 89 | 0,305 | 0,457 | |
| 80 x 25 | 3" x 1" | 88,9 | 33,7 | 89 | 0,274 | 0,411 | |
| 80 x 32 | 3" x 1 1/4" | 88,9 | 42,4 | 89 | 0,294 | 0,440 | |
| 80 x 40 | 3" x 1 1/2" | 88,9 | 48,3 | 89 | 0,307 | 0,460 | |
| 80 x 50 | 3" x 2" | 88,9 | 60,3 | 89 | 0,334 | 0,500 | |
| 80 x 65 | 3" x 2 1/2" | 88,9 | 76,1 | 89 | 0,369 | 0,553 | |
| 100 x 25 | 4" x 1" | 114,3 | 33,7 | 102 | 0,379 | 0,569 | |
| 100 x 32 | 4" x 1 1/4" | 114,3 | 42,4 | 102 | 0,402 | 0,602 | |
| 100 x 40 | 4" x 1 1/2" | 114,3 | 48,3 | 102 | 0,417 | 0,625 | |
| 100 x 50 | 4" x 2" | 114,3 | 60,3 | 102 | 0,447 | 0,671 | |
| 100 x 65 | 4" x 2 1/2" | 114,3 | 76,1 | 102 | 0,448 | 0,732 | |
| 100 x 80 | 4" x 3" | 114,3 | 88,9 | 102 | 0,521 | 0,781 | |
| 125 x 40 | 5" x 1 1/2" | 139,7 | 48,3 | 127 | 0,600 | 0,900 | |
| 125 x 50 | 5" x 2" | 139,7 | 60,3 | 127 | 0,638 | 0,957 | |
| 125 x 65 | 5" x 2 1/2" | 139,7 | 76,1 | 127 | 0,688 | 1,033 | |
| 125 x 80 | 5" x 3" | 139,7 | 88,9 | 127 | 0,729 | 1,094 | |
| 125 x 100 | 5" x 4" | 139,7 | 114,3 | 127 | 0,810 | 1,215 | |
| 150 x 50 | 6" x 2" | 168,3 | 60,3 | 140 | 0,804 | 1,206 | |
| 150 x 65 | 6" x 2 1/2" | 168,3 | 76,1 | 140 | 0,860 | 1,289 | |
| 150 x 80 | 6" x 3" | 168,3 | 88,9 | 140 | 0,905 | 1,357 | |
| 150 x 100 | 6" x 4" | 168,3 | 114,3 | 140 | 0,994 | 1,491 | |
| 150 x 125 | 6" x 5" | 168,3 | 139,7 | 140 | 1,083 | 1,625 | |
| 200 x 65 | 8" x 2 1/2" | 219,1 | 76,1 | 152 | 1,127 | 1,691 | |
| 200 x 80 | 8" x 3" | 219,1 | 88,9 | 152 | 1,176 | 1,764 | 2,352 |
| 200 x 100 | 8" x 4" | 219,1 | 114,3 | 152 | 1,273 | 1,910 | 2,546 |
| 200 x 125 | 8" x 5" | 219,1 | 139,7 | 152 | 1,370 | 2,055 | 2,740 |
| 200 x 150 | 8" x 6" | 219,1 | 168,3 | 152 | 1,479 | 2,219 | 2,958 |
| 250 x 80 | 10" x 3" | 273,0 | 88,9 | 178 | 1,618 | 2,427 | 3,236 |
| 250 x 100 | 10" x 4" | 273,0 | 114,3 | 178 | 1,732 | 2,598 | 3,464 |
| 250 x 125 | 10" x 5" | 273,0 | 139,7 | 178 | 1,845 | 2,768 | 3,691 |



Reducciones concéntricas y excéntricas

Accesorios de acero inoxidable para soldar



| Diámetro nominal | | D mm | D ₁ mm | L mm | Peso T=2 Kg | Peso T=3 Kg | Peso T=4 Kg |
|------------------|-----------|---------|----------------------|---------|-------------------|-------------------|-------------------|
| DN | Pulg. | | | | | | |
| 250 x 150 | 10" x 6" | 273,0 | 168,3 | 178 | 1,973 | 2,960 | 3,946 |
| 250 x 200 | 10" x 8" | 273,0 | 219,1 | 178 | 2,200 | 3,301 | 4,401 |
| 300 x 100 | 12" x 4" | 323,9 | 114,3 | 203 | 2,235 | 3,352 | 4,469 |
| 300 x 125 | 12" x 5" | 323,9 | 139,7 | 203 | 2,364 | 3,546 | 4,728 |
| 300 x 150 | 12" x 6" | 323,9 | 168,3 | 203 | 2,510 | 3,765 | 5,020 |
| 300 x 200 | 12" x 8" | 323,9 | 219,1 | 203 | 2,769 | 4,153 | 5,538 |
| 300 x 250 | 12" x 10" | 323,9 | 273,0 | 203 | 3,044 | 4,566 | 6,088 |
| 350 x 125 | 14" x 5" | 355,6 | 139,7 | 330 | 4,106 | 6,159 | 8,212 |
| 350 x 150 | 14" x 6" | 355,6 | 168,3 | 330 | 4,343 | 6,514 | 8,686 |
| 350 x 200 | 14" x 8" | 355,6 | 219,1 | 330 | 4,764 | 7,146 | 9,528 |
| 350 x 250 | 14" x 10" | 355,6 | 273,0 | 330 | 5,211 | 7,816 | 10,422 |
| 350 x 300 | 14" x 12" | 355,6 | 323,9 | 330 | 5,633 | 8,449 | 11,266 |
| 400 x 150 | 16" x 6" | 406,4 | 168,3 | 356 | 5,139 | 7,709 | 10,279 |
| 400 x 200 | 16" x 8" | 406,4 | 219,1 | 356 | 5,594 | 8,391 | 11,187 |
| 400 x 250 | 16" x 10" | 406,4 | 273,0 | 356 | 6,076 | 9,114 | 12,151 |
| 400 x 300 | 16" x 12" | 406,4 | 323,9 | 356 | 6,531 | 9,796 | 13,062 |
| 400 x 350 | 16" x 14" | 406,4 | 355,6 | 356 | 6,814 | 10,222 | 13,629 |
| 450 x 200 | 18" x 8" | 457,2 | 219,1 | 381 | | 9,709 | 12,945 |
| 450 x 250 | 18" x 10" | 457,2 | 273,0 | 381 | | 10,483 | 13,977 |
| 450 x 300 | 18" x 12" | 457,2 | 323,9 | 381 | | 11,214 | 14,951 |
| 450 x 350 | 18" x 14" | 457,2 | 355,6 | 381 | | 11,669 | 15,558 |
| 450 x 400 | 18" x 16" | 457,2 | 406,4 | 381 | | 12,398 | 16,531 |
| 500 x 250 | 20" x 10" | 508,0 | 273,0 | 508 | | 14,947 | 19,933 |
| 500 x 300 | 20" x 12" | 508,0 | 323,9 | 508 | | 15,924 | 21,232 |
| 500 x 350 | 20" x 14" | 508,0 | 355,6 | 508 | | 16,531 | 22,041 |
| 500 x 400 | 20" x 16" | 508,0 | 406,4 | 508 | | 17,503 | 23,337 |
| 500 x 450 | 20" x 18" | 508,0 | 457,2 | 508 | | 18,475 | 24,634 |
| 600 x 300 | 24" x 12" | 609,6 | 323,9 | 508 | | 17,869 | 23,825 |
| 600 x 350 | 24" x 14" | 609,6 | 355,6 | 508 | | 18,475 | 24,634 |
| 600 x 400 | 24" x 16" | 609,6 | 406,4 | 508 | | 19,448 | 25,930 |
| 600 x 450 | 24" x 18" | 609,6 | 457,2 | 508 | | 20,420 | 27,227 |
| 600 x 500 | 24" x 20" | 609,6 | 508,0 | 508 | | 21,392 | 28,523 |
| 700 x 350 | 28" x 14" | 711,2 | 355,6 | 610 | | 24,520 | 32,694 |
| 700 x 400 | 28" x 16" | 711,2 | 406,4 | 610 | | 25,688 | 34,250 |
| 700 x 450 | 28" x 18" | 711,2 | 457,2 | 610 | | 26,855 | 35,807 |
| 700 x 500 | 28" x 20" | 711,2 | 508,0 | 610 | | 28,023 | 37,364 |
| 700 x 600 | 28" x 24" | 711,2 | 609,6 | 610 | | 30,358 | 40,478 |

Calidad del material: AISI-304 / 304 L, 316 / 316 L, duplex.

Composición química: Ver página 8.

Características mecánicas: Ver página 9.

Bajo consulta se pueden fabricar en otros diámetros y espesores.

Tolerancias: Ver página 34.

Norma de fabricación: EN 10253-3/EN 10253-4.



Tolerancias para tubos soldados ISO y milimétricos

Diámetro y espesor

| Norma | Diámetro exterior | TOLERANCIA | | |
|--------------|--------------------------|--------------------------|--|----------------------------|
| | | Diámetro exterior | Espesor | |
| (OPCIONAL) { | EN-10217-7 EN-10296-2 | ≤ 168,3 mm > 168,3 mm | ± 0,75% (D3) mínimo ± 0,3 mm ± 1% (D2) | ± 10% (T3) mínimo ± 0,2 mm |
| | EN-10217-7 | ≤ 168,3 mm | ± 0,5% (D4) ± 0,1 mm (el mayor) | |
| | EN-10296-2 | ≤ 114,3 mm | ± 0,5% (D4) ± 0,15 mm (el mayor) | |

Longitudes estandar

EN-10217-7 Aleatoria - Si se requiere exacta $L \leq 6000\text{mm} \left\{ \begin{matrix} +5 \\ 0 \end{matrix} \right.$

EN-10296-2 $L = 6000\text{mm} \left\{ \begin{matrix} +100 \\ 0 \end{matrix} \right.$

Otras longitudes bajo pedido especial

Flecha

EN-10217-7 < 3 mm/m ó 0,0015 L

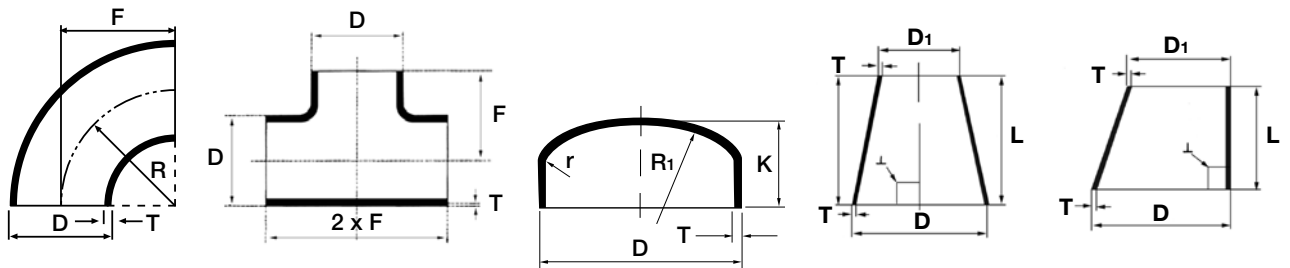
EN-10296-2 Diámetro < 33,7 mm - acuerdo
Diámetro > 33,7 mm - 0,002 L
Opcional: < 0,0015 L

Altura del cordón de soldadura

| Norma | Proceso de fabricación | Tolerancia de la soldadura externa (mm) | |
|---|---|---|--------------------------|
| EN-10217-7 En función del proceso de fabricación | <ul style="list-style-type: none"> • Según sale de soldadura → 0,10T + 0,5 • Rectificado Ø < 114,3 mm → 0,06T + 0,3 • Rectificado Ø > 114,3 mm → 0,05T + 0,5 • Soldadura laminada → 0,15 mm | } T ≤ 8 mm | |
| | Opcional: el tratamiento de la soldadura interna | | |
| EN-10296-2 En función de los acabados (A), (B) o (C) | (A) Sin eliminar soldaduras interna y externa → | T ≤ 8 mm: 0,20T + 0,5 mm T > 8 mm: T / 3 mm | |
| | (B) Eliminando la externa y sin eliminar la interna → | <ul style="list-style-type: none"> Ø ≤ 114,3 mm: 0,06T + 0,3 Ø > 114,3 mm: 0,05T + 0,5 Ø > 114,3 mm: T / 6 | } T ≤ 8 mm } T > 8 mm |
| | (C) Laminada interna y externa → | 0,15 mm (T ≤ 8 mm) | |



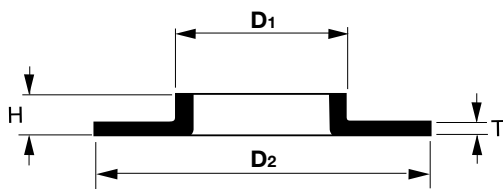
Tolerancias para accesorios de acero inoxidable gama ISO y milimétricos



S/EN 10253-3/4

| Diámetro D | Espesor T | Desviación permisible | |
|---------------|--------------|-----------------------|------|
| | | Menos | Más |
| $D \leq 610$ | Todos | -12,5% | +15% |
| $D > 610$ | ≤ 10 mm | - 0,35 mm | +15% |
| | > 10 mm | - 0,50 mm | +15% |

| D | F-H-L | B | K |
|---------------------------|----------|----------|----------|
| $\leq 114,3$ | ± 2 | ± 7 | ± 4 |
| $114,3 \leq D \leq 219,1$ | ± 2 | ± 7 | ± 7 |
| $219,1 \leq D \leq 406,4$ | ± 5 | ± 7 | ± 7 |
| $406,4 \leq D \leq 762$ | ± 5 | ± 10 | ± 7 |
| $762 \leq D \leq 1219$ | ± 10 | ± 10 | ± 10 |



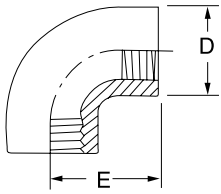
S/EN 1092-1 Tipo 33

| Dimensiones (mm) | Tolerancias |
|-------------------------------------|--------------------------------|
| Espesor T en el cuello: | |
| $DN \leq 600$ | -12,5% / +15% |
| $DN > 600$ | -0,5 mm / +15% |
| Espesor en la brida: | |
| $T \leq 5$ mm | +/- 0,2 mm |
| Altura H: | |
| Desde $DN \leq 80$ | $\pm 1,5$ mm |
| Desde $DN > 80$ hasta $DN \leq 250$ | ± 2 mm |
| Desde $DN > 250$ | ± 3 mm |
| Diámetro en el cuello D_1 : | |
| $DN \leq 150$ | $\pm 0,75\%$ mín. $\pm 0,3$ mm |
| $DN > 150$ | $\pm 1\%$ máx. $\pm 3,0$ mm |
| Diámetro en la brida D: | |
| $DN \leq 250$ | -1 / +2 mm |
| $DN > 250$ | -1 / +3 mm |

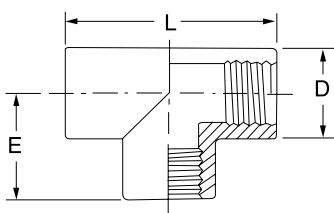


Accesorio roscado de acero inoxidable

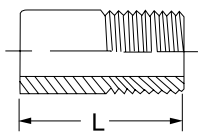
Medidas de fabricación



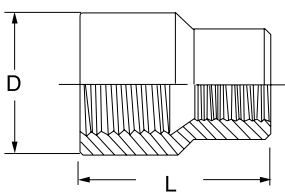
| Codo roscado figura 90 | | | | | | | | | | | | |
|------------------------|------|------|------|------|------|----|--------|--------|----|--------|----|----|
| | 1/8" | 1/4" | 3/8" | 1/2" | 3/4" | 1" | 1 1/4" | 1 1/2" | 2" | 2 1/2" | 3" | 4" |
| D | - | 19 | 23 | 27 | 33 | 41 | 50 | 56 | 69 | 84 | 98 | - |
| E | - | 21 | 25 | 28 | 33 | 38 | 45 | 50 | 58 | 70 | 80 | - |



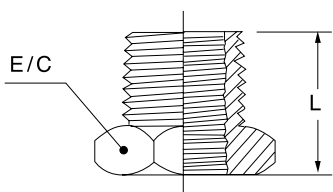
| Te roscada figura 130 | | | | | | | | | | | | |
|-----------------------|------|------|------|------|------|----|--------|--------|-----|--------|-----|----|
| | 1/8" | 1/4" | 3/8" | 1/2" | 3/4" | 1" | 1 1/4" | 1 1/2" | 2" | 2 1/2" | 3" | 4" |
| L | - | 42 | 50 | 56 | 66 | 76 | 90 | 100 | 116 | 140 | 160 | - |
| D | - | 19 | 23 | 27 | 33 | 41 | 50 | 56 | 69 | 84 | 98 | - |
| E | - | 21 | 25 | 28 | 33 | 38 | 45 | 50 | 58 | 70 | 80 | - |



| Entronque figura 149 | | | | | | | | | | | | |
|----------------------|------|------|------|------|------|----|--------|--------|----|--------|----|----|
| | 1/8" | 1/4" | 3/8" | 1/2" | 3/4" | 1" | 1 1/4" | 1 1/2" | 2" | 2 1/2" | 3" | 4" |
| L | 20 | 24 | 25 | 26 | 29 | 32 | 35 | 38 | 42 | 46 | 50 | 55 |



| Reduccion hembra - hembra figura 240 | | | | | | | | | | | | |
|--------------------------------------|------|------|------|------|------|----|--------|--------|----|--------|-----|----|
| | 1/8" | 1/4" | 3/8" | 1/2" | 3/4" | 1" | 1 1/4" | 1 1/2" | 2" | 2 1/2" | 3" | 4" |
| L | - | 24 | 26 | 28 | 30 | 34 | 42 | 45 | 55 | 60 | 70 | - |
| D | - | 20 | 22 | 28 | 32 | 40 | 50 | 60 | 70 | 85 | 100 | - |



| Reduccion macho - hembra figura 241 | | | | | | | | | | | | |
|-------------------------------------|------|------|------|------|------|----|--------|--------|----|--------|----|----|
| | 1/8" | 1/4" | 3/8" | 1/2" | 3/4" | 1" | 1 1/4" | 1 1/2" | 2" | 2 1/2" | 3" | 4" |
| L | - | 15 | 15 | 18 | 20 | 23 | 25 | 30 | 32 | 35 | 38 | - |
| E/C | - | 14 | 17 | 22 | 27 | 36 | 44 | 50 | 65 | 80 | 93 | - |

TOLERANCIAS:

Roscas según ISO 7/1 (EN 10226-1)

Calidad del material: AISI 316 L

Composición química: Ver página 8.

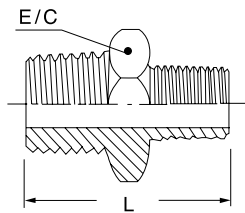
Características mecánicas: Ver página 9.

Bajo consulta se pueden fabricar otras figuras o calidades.

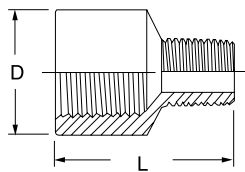


Accesorio roscado de acero inoxidable

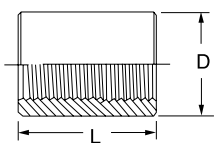
Medidas de fabricación



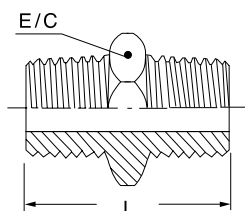
| Reduccion macho - macho figura 245 | | | | | | | | | | | | |
|------------------------------------|------|------|------|------|------|----|--------|--------|----|--------|----|----|
| | 1/8" | 1/4" | 3/8" | 1/2" | 3/4" | 1" | 1 1/4" | 1 1/2" | 2" | 2 1/2" | 3" | 4" |
| L | - | 25 | 26 | 29 | 33 | 38 | 40 | 45 | 50 | 60 | 62 | - |
| E/C | - | 14 | 17 | 22 | 27 | 36 | 44 | 50 | 65 | 80 | 95 | - |



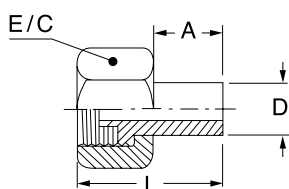
| Reduccion hembra - macho figura 246 | | | | | | | | | | | | |
|-------------------------------------|------|------|------|------|------|----|--------|--------|----|--------|-----|----|
| | 1/8" | 1/4" | 3/8" | 1/2" | 3/4" | 1" | 1 1/4" | 1 1/2" | 2" | 2 1/2" | 3" | 4" |
| L | - | 24 | 26 | 28 | 34 | 35 | 41 | 45 | 55 | 60 | 60 | - |
| D | - | 20 | 22 | 28 | 32 | 40 | 50 | 60 | 70 | 85 | 100 | - |



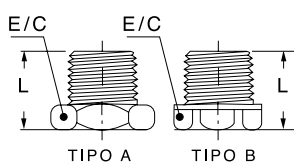
| Manguito rosca interior figura 270 | | | | | | | | | | | | |
|------------------------------------|------|------|------|------|------|----|--------|--------|----|--------|-----|-----|
| | 1/8" | 1/4" | 3/8" | 1/2" | 3/4" | 1" | 1 1/4" | 1 1/2" | 2" | 2 1/2" | 3" | 4" |
| L | 20 | 23 | 24 | 27 | 29 | 32 | 35 | 38 | 42 | 45 | 50 | 55 |
| D | 14 | 18 | 22 | 28 | 35 | 40 | 50 | 55 | 70 | 85 | 100 | 125 |



| Machon figura 280 | | | | | | | | | | | | |
|-------------------|------|------|------|------|------|----|--------|--------|----|--------|----|-----|
| | 1/8" | 1/4" | 3/8" | 1/2" | 3/4" | 1" | 1 1/4" | 1 1/2" | 2" | 2 1/2" | 3" | 4" |
| L | 20 | 26 | 28 | 30 | 33 | 38 | 40 | 45 | 50 | 60 | 62 | 72 |
| E/C | 11 | 14 | 17 | 22 | 27 | 36 | 44 | 50 | 65 | 80 | 95 | 121 |



| Medio enlace figura 287 | | | | | | | | | | | | |
|-------------------------|------|------|------|------|------|----|--------|--------|----|--------|-----|----|
| | 1/8" | 1/4" | 3/8" | 1/2" | 3/4" | 1" | 1 1/4" | 1 1/2" | 2" | 2 1/2" | 3" | 4" |
| L | - | 23 | 26 | 36 | 36 | 41 | 47 | 49 | 55 | 57 | 70 | - |
| D | - | 8 | 12 | 15 | 20 | 25 | 35 | 41 | 52 | 65 | 77 | - |
| A | - | 11 | 12 | 20 | 20 | 21 | 25 | 27 | 32 | 33 | 45 | - |
| E/C | - | 17 | 22 | 27 | 32 | 41 | 46 | 55 | 68 | 90 | 100 | - |



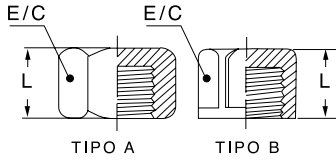
| Tapon figura 290 | | | | | | | | | | | | |
|------------------|---------------|------|------|------|------|----|--------|--------|----|--------|---------------|-----|
| | 1/8" | 1/4" | 3/8" | 1/2" | 3/4" | 1" | 1 1/4" | 1 1/2" | 2" | 2 1/2" | 3" | 4" |
| | TIPO A | | | | | | | | | | TIPO B | |
| L | 12 | 15 | 17 | 18 | 21 | 26 | 28 | 30 | 32 | 34 | 38 | 40 |
| E/C | 11 | 14 | 17 | 22 | 27 | 36 | 46 | 50 | 65 | 80 | 94 | 116 |

Roscas según ISO 7/1 (EN 10226-1)

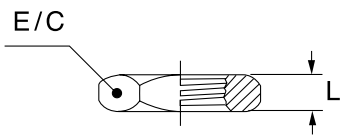


Accesorio roscado de acero inoxidable

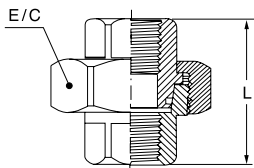
Medidas de fabricación



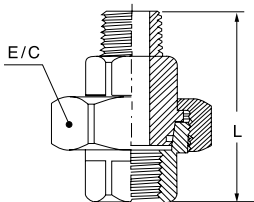
| Tapa figura 300 | | | | | | | | | | | | |
|-----------------|--------|------|------|------|------|----|--------|--------|--------|--------|-----|-----|
| | 1/8" | 1/4" | 3/8" | 1/2" | 3/4" | 1" | 1 1/4" | 1 1/2" | 2" | 2 1/2" | 3" | 4" |
| | TIPO A | | | | | | | | TIPO B | | | |
| L | 12 | 12 | 13 | 14 | 16 | 20 | 21 | 22 | 24 | 24 | 25 | 30 |
| E/C | 14 | 17 | 22 | 27 | 32 | 41 | 50 | 55 | 68 | 90 | 100 | 127 |



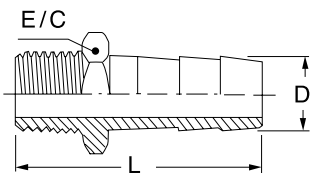
| Tuerca figura 312 | | | | | | | | | | | | |
|-------------------|------|------|------|------|------|----|--------|--------|----|--------|-----|----|
| | 1/8" | 1/4" | 3/8" | 1/2" | 3/4" | 1" | 1 1/4" | 1 1/2" | 2" | 2 1/2" | 3" | 4" |
| L | - | 5 | 6 | 7 | 8 | 8 | 10 | 10 | 10 | 13 | 13 | - |
| E/C | - | 17 | 22 | 27 | 32 | 41 | 50 | 65 | 73 | 90 | 100 | - |



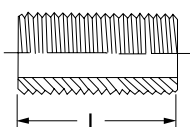
| Enlace rosca hembra - hembra figura 340 | | | | | | | | | | | | |
|---|------|------|------|------|------|----|--------|--------|----|--------|-----|----|
| | 1/8" | 1/4" | 3/8" | 1/2" | 3/4" | 1" | 1 1/4" | 1 1/2" | 2" | 2 1/2" | 3" | 4" |
| L | - | 33 | 37 | 41 | 44 | 49 | 56 | 57 | 62 | 62 | 66 | - |
| E/C | - | 32 | 36 | 41 | 46 | 54 | 67 | 73 | 90 | 106 | 120 | - |



| Enlace rosca macho - hembra figura 341 | | | | | | | | | | | | |
|--|------|------|------|------|------|----|--------|--------|----|--------|-----|----|
| | 1/8" | 1/4" | 3/8" | 1/2" | 3/4" | 1" | 1 1/4" | 1 1/2" | 2" | 2 1/2" | 3" | 4" |
| L | - | 45 | 49 | 53 | 58 | 62 | 73 | 76 | 83 | 87 | 87 | - |
| E/C | - | 32 | 36 | 41 | 46 | 54 | 66 | 73 | 90 | 106 | 120 | - |



| Entronque manguera figura 399 | | | | | | | | | | | | |
|-------------------------------|------|------|------|------|------|----|--------|--------|----|--------|-----|----|
| | 1/8" | 1/4" | 3/8" | 1/2" | 3/4" | 1" | 1 1/4" | 1 1/2" | 2" | 2 1/2" | 3" | 4" |
| L | - | 38,5 | 42 | 47 | 50 | 56 | 65 | 72 | 85 | 97 | 107 | - |
| D | - | 12 | 15 | 19 | 25 | 30 | 40 | 50 | 60 | 76 | 86 | - |
| E/C | - | 14 | 17 | 22 | 27 | 36 | 46 | 54 | 65 | 85 | 99 | - |
| 399 R | | 10 | 12 | 15 | 20 | 25 | | | | | | |



| Manguito rosca exterior figura 531 | | | | | | | | | | | | |
|------------------------------------|------|------|------|------|------|----|--------|--------|----|--------|----|----|
| | 1/8" | 1/4" | 3/8" | 1/2" | 3/4" | 1" | 1 1/4" | 1 1/2" | 2" | 2 1/2" | 3" | 4" |
| L | - | 24 | 25 | 26 | 29 | 32 | 35 | 38 | 42 | 46 | 50 | 55 |

